

SMYTH COUNTY AND THE TOWN OF MARION, PARTIAL REVIEW, 1832 TO 1914

FIRST COURT HELD ONE MILE EAST OF MARION

To write briefly of Smyth county will be an exceedingly difficult undertaking, though it is a labor of love. There is so much of interest connected with its history that it seems almost impossible to confine within the narrow space this article must occupy what one would like to tell.

In succession the territory that is now embraced within the boundaries of Smyth county was a part of Fineston county, of Montgomery and Washington counties, and then, until the county was formed of Washington and Wythe counties.

By an Act of the General Assembly of Virginia, approved February 23rd,

of these, Isaac J. Leftwich, lived until some seventeen years ago, and was well known to the writer.

The same Act also provided that the county court of Smyth county should be composed of fifteen justices to be appointed and commissioned by the Governor of Virginia, and directed that the first court should be held at the house of John Thomas. This house was known as Royal Oak and was built by Arthur Campbell, who settled at that point in 1766, a mile east of where the court house now stands.

The Act of January 23rd, 1832, appointed Charles L. Crockett, of Wythe,

ceeded to do the work as directed, and made their report to the county court on June 22nd, 1832. It seems that the agreement between the county and Humes was that a certain number of lots were to be given the county and the remainder to be the property of Humes. The commissioners in their report state that they made public sale of nineteen lots as directed by the court after due advertisement in newspapers published at Abingdon and Evansham (the latter now Wytheville). They reported the names of the purchasers and the prices paid, and filed a plat or map of the streets, alleys and lots with their report. The map can be seen in the records of the clerk's office.

On the 22nd of June the county court appointed John H. Fulton and Charles E. Harrison commissioners to enter into suitable covenants with John Dameron and Thomas W. Mercer, of Jonesborough, Tenn., to build a court house and jail. The contract price was \$7,750.00, and the work was to be completed in eighteen months. The court house was accepted on January 23rd, 1834, the jail having been previously completed and received. These two buildings, the court house built of brick and the jail of stone, were used by the county for their several intended purposes, until torn down in 1905 to be replaced by the present magnificent court house and the modern jail building.

Thus did Smyth county, the daughter of Wythe and Washington, start out on her career in 1832. Of much smaller area than either Wythe or Washington, she has advanced and grown in importance until, as a manufacturing and great agricultural territory, she has become a worthy rival of her two great parents.

I have thought it best to restrict this article chiefly to a recital of the establishment and organization of Smyth county. There is not sufficient space to give even a fractional part of the many interesting facts and traditions connected with the history of the county between the years 1832 and 1914. In the future, I will try to partially, if not completely, fill the gap.

Smyth county has a total area of 316,425 acres. It is about twenty-two miles wide, running from east to west, and twenty-eight miles from north to south.

From the few thousands of persons in the county when formed in 1832, the population had increased when the census was taken in 1900 to 18,231—of which 17,061 were white persons and 1,170 were negroes. The population of the county by the census of 1910 was 20,326.

There are more than sixty miles of railway track in the county, of which fifteen miles are main track.

In addition to Marion, there are two splendid towns, Saltville and Chilhowie in the county, and five thriving villages—Atkins, Teas, Sugar Grove, North Holston and Seven Mile Ford.

There are more than seventy-five public school houses in the county, with about 120 teachers, and more than five thousand pupils.

The county has over six hundred miles of turnpikes and graded roads; and is now engaged in building modern highways as rapidly as possible in the three magisterial districts.

The agricultural products have become enormous, and with modern methods are constantly enlarging.

The towns and county now have a number of splendid manufacturing industries, giving employment to many hundreds of men, and bringing much wealth to the people of the several localities in which they are located.

This article has grown to a length that will permit of no further extension; and I will have to stop, without telling a hundredth part of what I started to write.

Wm. C. P.

JAS. F. PENDLETON

James F. Pendleton, son of William and Nancy Strother Pendleton, was born in Culpepper county, Va., July 1st, 1805. His mother died when he was a boy; and when about eighteen years of age he went to Wytheville, Virginia,



JAS. F. PENDLETON (From a medallion made 70 years ago.)

academy at that place. History tells us that Colonel Piper, when a youth and a student at Washington College, scaled the Natural Bridge in Rockbridge county—a desperately daring feat, never before and never since accomplished by man. Colonel Piper was a first cousin of Mr. Pendleton's mother.

After completing his education at the Piper Academy, James F. Pendleton went to Tazewell county to teach school. He resided there several years, engaged in teaching, acting as deputy clerk for Captain John Crockett, then clerk of Tazewell county. On the 3rd of September, 1829, he was married to Narcissa T. Cecil, eldest daughter of Samuel Cecil. About the year 1830 he moved to what was then Washington county, now Smyth county, and located at or near Broadford to teach a school. In 1831 he came to this community, and taught a school near the old Mitchell Scott place, one mile west of Marion. When Smyth county was formed, the county court at its first session, April 2nd, 1832, elected Col. Robert Beattie clerk of the court. Colonel Beattie made the race for the benefit of James F. Pendleton, appointed him deputy, and gave him all the emoluments of the office. From that date until January 1st, 1859, he was clerk of the county court of Smyth county. In May, 1835, he purchased from Isaac Collins his farm, just west of Marion, and moved there. He built the house now known as the Look property, and resided there until 1859, when he moved to Richmond, Va.

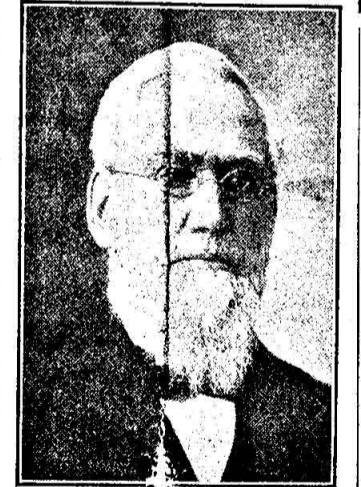
After his defeat for clerk, by Wm. C. Sexton, in 1859, he was appointed superintendent of the Virginia penitentiary by Governor Henry A. Wise, and held that position until 1863.

When the Civil War was over, in January, 1866, he was re-elected superintendent of the penitentiary, and held the position until removed by the military government of the State, which was set up in the spring of 1868. In 1870 he returned to Marion, and lived here until he died, September 12th, 1878.

W. C. SEXTON

William Current Sexton was the second clerk of the county of Smyth, and filled that responsible position for a period of forty-eight years. He was the son of Joseph and Maria Sexton, and was born at Chatham Hill, Smyth county, Va., May 30th, 1828. On April 1st, 1852, he married Miss Rachel Clements Roberts, daughter of John and Catherine Roberts, at Broadford in this county. From the date of his marriage until 1858 he was engaged in merchandizing at Broadford. In 1858 he was elected clerk of the county court of Smyth county, defeating James F. Pendleton, who had held the position of clerk of the county from the time the county was formed.

Mr. Sexton came with his family to Marion and took charge of the clerk's



W. C. SEXTON

office on January 1st, 1859. He resided in the brick house known as the Stallard property on Main Street, a short distance east of Staley's Creek bridge. Mrs. Sexton died February 21st, 1866; and in 1868 he moved to his farm two miles west of Mason, where he continued to reside until the fall of 1912, when he came to Marion and resided with his daughter, Mrs. A. T. Lincoln, until his death, May 19th, 1913.

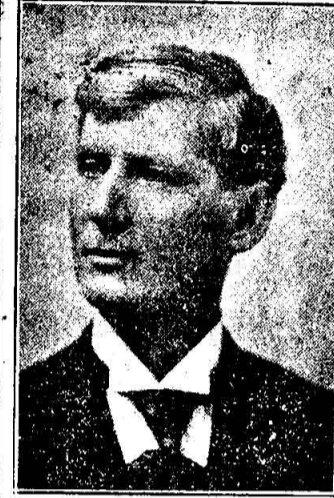
Mr. Sexton had three brothers in the Confederate service as members of the "Smyth Blues," 4th Virginia Infantry, Stonewall Brigade. All three lost their lives in the service. Benjamin Franklin Sexton was killed at the Second Manassas battle, 1863; Solomon McDonald Sexton was killed at Gettysburg, and Albert Freilinghuysen died in prison at Elmira, New York, in 1864.

The subject of this brief sketch was a very genial man, of striking personality and very popular with his fellow-citizens as his repeated re-election to that office proved. He filled the position of county court clerk for forty-eight years, retiring from that office January 1st, 1907.

This edition of THE AMERICAN has cost much pains-taking labor and anxiety, and if you are pleased we will feel repaid.

SAMUEL W. KENT

Samuel W. Kent is the third clerk of Smyth county that was elected by the people. He is the son of Jacob B. and Martha Campbell Kent, and was born in Washington County, Va., on March 15th, 1859. In 1881 he came to Smyth County, and embarked in the mercantile business at Broadford, Va. There, on the 13th of June, 1882, he married Mrs. Amanda J. Repass, daughter of Captain A. T. Starrett, who was then a resident of Broadford. He served as



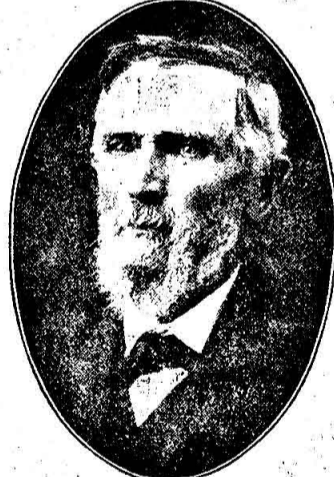
S. W. KENT

postmaster and assistant-postmaster at Broadford for sixteen years, under the administrations of Garfield, Cleveland, Harrison and McKinley. In October, 1901, he moved to Marion, and engaged in the mercantile business here for four years. In 1906 he was elected clerk of Smyth county, and entered upon the duties of the office January 1st, 1907, as successor to Wm. C. Sexton. He was re-elected in 1912, and is now filling the duties of the office most acceptably.

Two very peculiar circumstances are connected with Mr. Kent's election to the clerkship, as the successor of Wm. C. Sexton. He lived in the same house at Broadford that Mr. Sexton occupied when he resided there, and sold goods there as Mr. Sexton had done. Then, when Mr. Kent came to Marion he took up his residence in the same dwelling that Mr. Sexton had occupied for nine years after he became clerk.

JOHN S. COPENHAVER

John S. Copenhaver is the only living ex-clerk of the circuit court for Smyth county. Prior to the State Constitution of 1870 the county and circuit court



JNO. S. COPENHAVER

clerkships were separate offices. Mr. Copenhaver was born Dec. 10th, 1831, in the community known as Chilhowie, about five miles west of Marion, and is descended from a family who were among the earliest settlers in that section of the county. He came to Marion in 1856, and became deputy for Edward A. Scott, who was then clerk of the circuit court, and also deputy for James F. Pendleton, clerk of the county court. In 1858 he was elected clerk of the circuit court, and as clerk, or deputy, from that time practically performed the duties of the office until the two clerkships were combined by the Constitution of 1870.

Mr. Copenhaver reached the venerable age of eighty-two the 10th, of December, 1913. He is still active, physically and mentally; and continues to discharge the duties of commissioner of accounts for Smyth county most efficiently. He has held this position for a number of years.

Something Notable.

"Wombat has made the greatest chemical discovery of the age." "Something to relieve pain or prolong life, no doubt?" "Tush, no. It's the finest complexion preparation ever compounded by the hands of man."

"She Didn't Understand." "I am in the seventh heaven of delight," exclaimed the bridegroom as they marched down the aisle.

"Why, Henry," pouted the bride, "I thought you told me you had only been married five times."

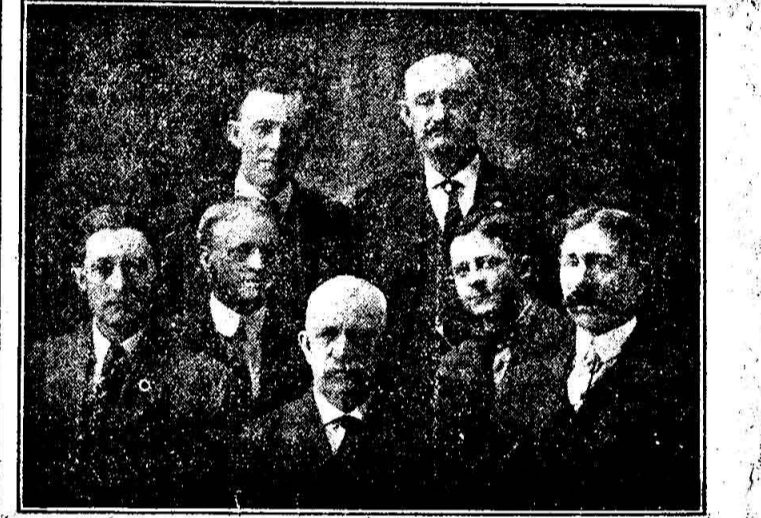
MARION THE METROPOLIS A TOWN OF PROMISE

The town of Marion was located in April, 1832, by the commissioners mentioned in the historical sketch of Smyth county, published on this same page. The same commissioners selected one acre of ground for the public buildings of the county, the acre upon which the present county court house now stands.

Marion received its name from General Francis Marion, the gallant son of South Carolina, who rendered such splendid service to his country in the Revolutionary War. So intimate was his knowledge of the sections of the country where he harassed the British, and so swift and shrewd were his movements, he was called "The Swamp Fox." How the town happened to get the name, we are informed by Mr. C. B. Thomas, of Wytheville, who writes: "I have heard my father say, when the commissioners were laying out the coun-

of the town prior to 1852. The town limits, proper, then extended from the bridge on Main Street, that spans Staley's Creek, to the western boundaries of the grounds of Marion College. Then the town had possibly 500 population, no manufacturing plants, two churches, Presbyterian and Methodist, half a dozen general merchandise stores, wheelright shops, cabinet shops, blacksmith shops, shoe shops, saddle and harness shops; two tailor shops; two taverns; two schools, one for boys and one for girls; two grist mills, and one barber shop. The people were industrious, religious, social and happy. This condition continued up to the beginning of the civil war.

During the seventies of the last century the town began to grow and slowly take on industrial activity. The real substantial activity that is now making



TOWN COUNCIL

Upper row, reading from left to right, J. H. Rouse, J. W. Rice; lower row, J. F. Crabtree, W. E. Francis, W. C. Seaver, Geo. H. Miles, Walter E. Johnston. That they stayed all night at my grandfather's, Thomas Thomas; that they were somewhat at a loss as to what name to give the town; and were talking over the matter in the presence of my grandmother, Frelove Thomas. She suggested that they name the town Marion, after Gen. Francis Marion; and

the town noted was started less than ten years ago. By the census of 1880 the population of the town was 919. The census of 1910 gave Marion a population of 2,727; and it is confidently believed that a count made now would show a population of 3,500.



R. T. GREER

that the commissioners adopted her suggestion, hence the name.

At the May term, 1832, of the county court of Smyth county, C. E. Harrison, Henry B. Thompson, Edward Fulton, George W. Davis and James F. Pendleton were appointed by the court commissioners to lay off the streets, alleys and lots of the town, and make sale of the lots that would become the property of the county. That duty was performed, as is recited in the article on Smyth county.

The writer has no definite knowledge

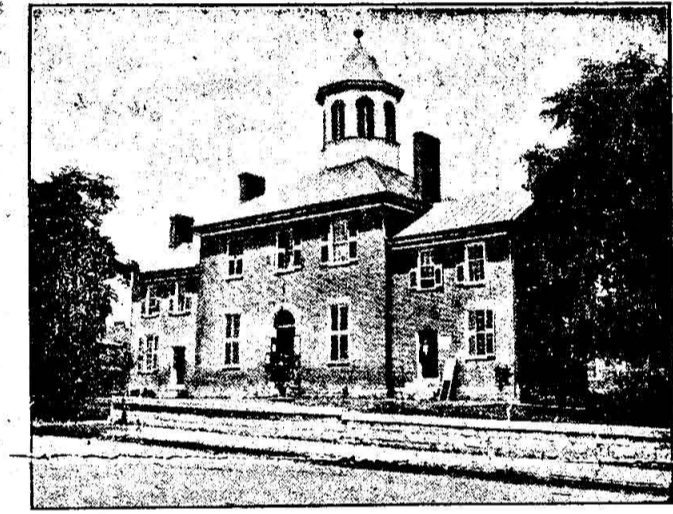


W. E. GREER

There are more beautiful residences in the place than any town of the same size in the State. We have the handsomest court house in Virginia. There are five beautiful church edifices, a splendid High School building, and half a dozen extensive industrial enterprises. These industries furnish employment to nearly four hundred men, and give great impulse to the business of the place.

Marion College, with a splendid new building, is just entering upon an era

(Continued on Page Four)



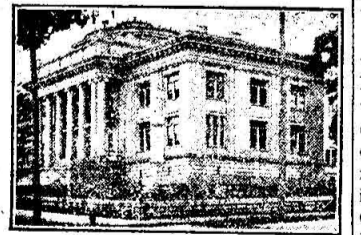
SMYTH COUNTY'S FIRST COURT HOUSE

1832, Smyth county was formed from the counties of Wythe and Washington. The boundaries of the county were constituted and defined as follows:

"Beginning on the Main Stage road at a bridge in a hollow at the point where the spring branch of Philip Greer, deceased, crosses the same; thence a direct line passing equidistant between Preston & King's Saltwells, to the line of Russell county, and from said point on Main Stage road aforesaid, where said spring branch crosses the same, running south 25 degrees east to the southern boundary of Washington county, and beginning on the Main Stage road leading by Abingdon and Wythe court houses, ten miles by said road, from the line dividing Washington and Wythe counties, running thence northwest to the northern boundary of Wythe county, and southeast to the southern boundary of Wythe county, the said line through Wythe county running precisely parallel with the line aforesaid through Washington county."

The beginning point for running the lines of the county is at the branch just west of the residence of the late Gen. James S. Greever, grandson of Philip Greever, and about one mile west of the town of Chilhowie. From this point the west line of the county was run as directed by the Act of the General Assembly.

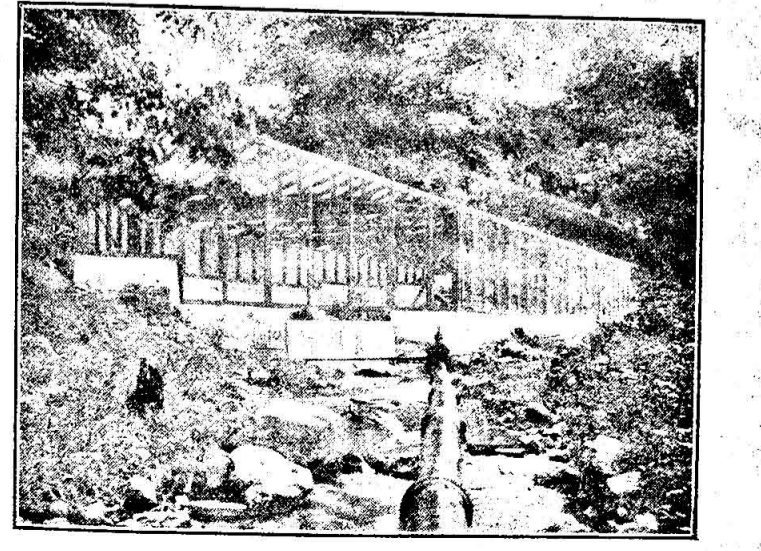
The line between Washington and Wythe counties ran due south from the ford of the river just east of where old



COURT HOUSE

Royal Oak church stood—that is one and a half miles east of Marion—to the Grayson county line. From the same ford the line between Wythe and Washington ran in a westerly course to the Tazewell county line. It will thus be seen that the eastern line of Smyth county can be located by measuring ten miles east along the route of the old Main Stage road from a point north of the ford near Royal Oak, which will place the east county line about half a mile east of the old Jonathan Aker residence, or about eleven and a half miles east of Marion.

The Act of the General Assembly which created Smyth county appointed Isaac J. Leftwich, of Wythe; Edward Fulton, of Washington, and John Campbell, of Smyth, to run and mark the boundary lines of the new county. One



Mountain spring, source of water supply, furnishing 3,000,000 gallons daily

MATHIESON ALKALI WORKS

INDUSTRY OF WIDE IMPORT

From Small Beginning This Enterprise Grows to Mammoth Proportions.

THE ANNUAL OUTPUT EIGHTY THOUSAND TONS

Second Largest Freight Producer on the Norfolk & Western Railway. Interesting History.

The most historic and important spot in this section of Virginia is at Saltville, in Smyth county, where is located the Mathieson Alkali Works. Formerly in writing about this great industrial enterprise we declared it to be "wonderful in proportions and supreme in importance among the industrial enterprises of this section of Virginia; and possibly the most unique in the State, for its operations have been practically continuous ever since its establishment." The basin or flat marsh land, about three hundred acres in extent, on which the beautiful and thriving town of Saltville is now located, is one of the tracts pointed out by the hermit hunter, Sinclair, to Colonel James Patton, the explorer, in 1748. When the tract was surveyed by Colonel Patton it was allotted to Charles Campbell, one of Colonel Patton's exploring party of 1748. The patent for this boundary, known as the "Salt Lick," and consisting of 330 acres, bears date October 23, 1753. The grant was made to Charles Campbell, by Lord Dinwiddie, then Governor of the Colony of Virginia, in the name of George II, who styled himself: "George the Second by the grace of God of Great Britain, France and Ireland, King, Defender of the faith," etc. It was afterwards called "Preston's Salines;" and in Jedediah Morse's geography, printed in 1805, the following is part of the description given by the geographer: "Preston's Salines are on the North Fork of the Holston, half a mile south of the river, seventeen or eighteen easterly of Abingdon. The tract that contains the Salines is a great curiosity. It was discovered by Captain Charles Campbell about 1745, who was one of the first explorers of the western country. In 1758 he procured a patent from the Governor of Virginia. His son, the late General William Campbell, the same who behaved so gallantly in the American war in the year 1780 and 1781, became owner of it on his death. But it was not till the time of his death, when salt was very scarce and dear, that salt water was discovered, and salt made by a poor man. After this time, under the direction of Colonel Arthur Campbell, it was improved to a considerable extent, and many thousands of inhabitants are now supplied with salt—a superior quality—at a low price. The tract consists of 300 acres of flat marsh land of as rich a soil as can be imagined. In this flat pits are sunk in order to obtain the salt water. They are from sixty to ninety feet deep. After passing through the rich soil or mud, you come to a very brittle limestone rock, with cracks or chasms through which the salt water issues into the pits, whence it is drawn by buckets and put into the boilers, which are placed in furnaces adjoining the pits. The hills that surround this flat are covered with fine timber. Near this Mr. King has a well more than 200 feet deep, ten feet square, constantly more than half full of water. Thirty-two gallons of this, and some of the other wells, make one bushel of salt. Two hundred bushels have been made in a day. It is equal to Liverpool salt. He can supply the State of Tennessee and Southwest Virginia with this essential article."

This wonderful industry at "Preston's Salines" in 1805, with a possible daily output of 200 bushels of salt, enough to supply the needs of the State of Tennessee and Southwest Virginia, was the forerunner of the great Mathieson Alkali Works with its annual output of 80,000 tons of the various chemicals it is manufacturing.

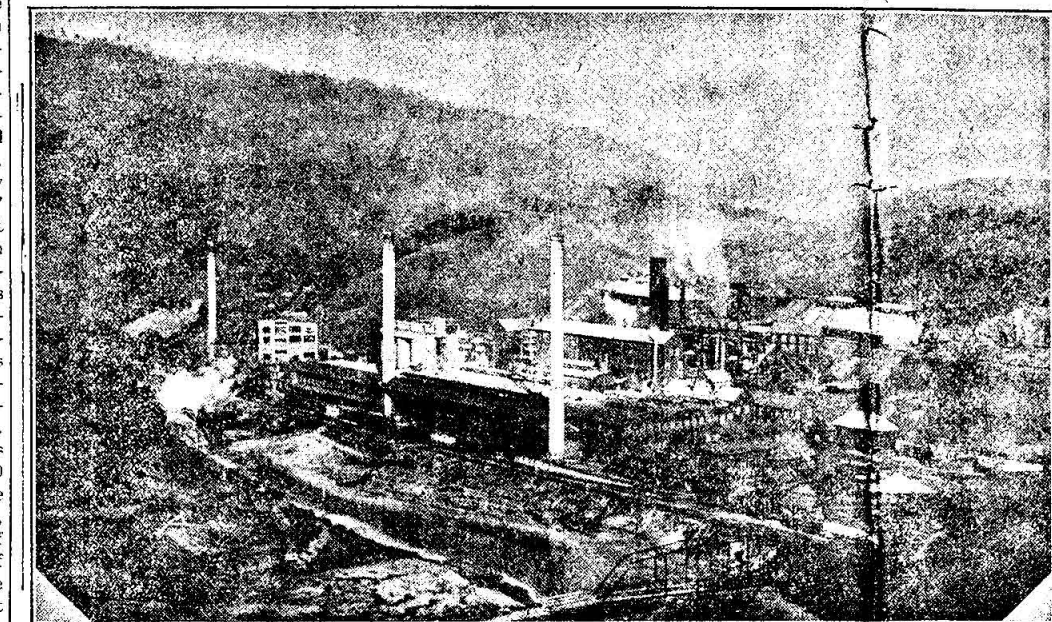
Wm. King struck water in his well, located on a tract of land he owned just west of the Campbell boundary, in 1799; and in 1801 he rented the Preston Salines. The industry was then given the name of the Holston Salt Works. William King was a very successful business man and left what was then considered an enormous fortune.

The Holston Salt Works were then leased and run by various persons for various terms of years up to the time when the late Colonel Thomas L. Preston was given the management of the Preston estate. He subsequently got control of the King Salt Works under lease, and kept control of the united properties until 1858, when he rented both estates to Spencer, Ackerman & Co., a company composed of men from the Northern States.

"In 1863, Stuart, Palmer and Parker purchased the Preston property from Robert Gibbony, trustee of Thomas L. Preston; and in 1864 a joint stock company of the two estates was formed under the title of the Holston Salt and Plaster Company. In 1893 the joint saline estates were purchased by the present proprietors."

We have obtained these historical facts from the "Reminiscences of an Octogenarian," written by the late Colonel Thomas L. Preston and published in 1900.

During the Civil War, 1861-65, the Holston Salt Works was a place of essential need to the people of the Confederate States, especially of those States of the Confederacy east of the Mississippi river, as these works were the only reliable source from which the essential article, salt, could be secured by the above mentioned Southern States. This condition caused frequent efforts on the part of the Federal Government to have its troops capture and destroy the Salt Works. The most notable effort was made by General Burbridge in October, 1864. He assembled an army of 5,000 soldiers in Eastern Kentucky in September, marched into Virginia, on through Tazewell county, and on Saturday night, October 1st, 1864, went



MATHIESON ALKALI WORKS

into camp at Laurel Gap in this county. The following morning, Sunday, October the 2nd, he marched his army toward Saltville; and at a point half a mile east of the lower works, at or near Buffalo Ford, came in contact with the Confederate forces under the command of General John S. Williams. The Confederate lines were formed on the south side of the river, the Federals forming their lines on the north side. The Federals had four thousand eight hundred regular picked troops and the Confederates had only three thousand men, regulars and reserves. The battle raged for several hours, but the Federals were defeated and routed. The loss of the Federals was about three hundred and fifty killed and wounded and from three to five hundred prisoners captured. The Confederate loss was eight killed and fifty-one wounded.

In December, 1864, the Federal troops under General Stoneman, who had led a raid through Washington and Smyth counties, to the Lead Mines in Wythe county, returning from the raid, captured Saltville, with little resistance from the Confederates and destroyed the works.

Returning to the present and to the operations of the Mathieson Alkali Works, the scene of activity has been moved about one mile northeast of the location of the old Salt Works, the manufacturing plant standing on the banks of the North Fork of Holston River.

The Mathieson Alkali Works was chartered and established in 1893, then taking over the valuable property of the Holston Salt and Plaster Company. This property consisted of 12,000 acres of land of great agricultural value and abounding in mineral wealth.

The company was formed for the purpose of manufacturing salt, soda, soda ash, caustic soda, bicarbonate of soda and bleaching powder. All these chemicals are being manufactured, except salt and bleaching powder. The latter chemical is manufactured by a subsidiary company, the Castner Electrolytic Company, located at Niagara Falls.

The annual output of the works—consisting of soda ash, bicarbonate of soda and caustic soda—has reached the enormous proportions of 80,000 tons, most of the output being consumed in the United States.

When the company was organized in 1893, E. E. Arnold became its first president, and served in that capacity, with great efficiency, for ten years. Previous to 1893 he had been one of the largest importers of alkalis from foreign countries for consumption in the United States.

The present officers of the company are: James M. Edwards, president, New York, N. Y.; E. E. Arnold, vice-president, Providence, R. I.; J. R. Gladding, secretary and treasurer, Providence, R. I.; J. S. Goetchius, assistant treasurer, Saltville, Va.; W. D. Mount, general manager, Saltville, Va.; Palmer St. Clair, outside superintendent, and Chas. E. Wiley, inside superintendent, Saltville, Va. The position of general manager of such an enterprise as the Mathieson Alkali Works requires a man of strong will, great energy, active mind, abundant moral and physical courage, and one thoroughly educated in mechanical engineering. And the successful management of the business or financial matters of an enterprise so vast demands unusual skill, absolute fidelity and unlimited industry. Messrs. Mount

and Goetchius possess all the essential qualities for filling the positions of great responsibility they now occupy.

But to return to the operations of the company. The coage department is of immense proportions, with a capacity of 800 barrels or 1,300 kegs per day. One thousand tons of bicarbonate of soda were shipped in the month of June, 1913, and other chemicals in proportion. The chemicals are made from salt brine, which is pumped from the ground, coming from the lake that is supposed to underlie the basin just above where the works are located. And 350,000 gallons of this brine are used daily. Large quantities of limestone are needed in the manufacture of the chemicals. To supply this, the company operates its own quarry, which is three miles from the works. The stone is quarried and crushed, and is conveyed thence by an aerial tramway to the works. Five hundred tons of limestone are consumed each day. The annual consumption of coal amounts to 125,000 tons, and the industry is the second largest freight producer on the Norfolk and Western Railway.

About 100 yards east of the railway station the company has a very large company store or commissary, a two-story building, the upper floor being used for offices. While the company

factory, a chair factory, an extract factory and numerous prosperous merchants and farmers.

The revenue for the past year for the two roads and tonnage is herewith given. Marion & Rye Valley 8772 passengers, revenue \$4637.00, 39,771 tons freight, revenue \$71,786.00. Virginia Southern Railroad 7,473 passengers, revenue \$2,775.00, 97,678 tons freight, revenue \$40,247.00. From these figures it will be seen that the combined passenger fares collected from the two roads amounted to \$7,412.00, while the total revenue from freight reached the enormous sum of \$112,031.

There are employed in the maintenance of the Marion & Rye Valley 49 men, while the Virginia Southern employs 36. These roads have done much to develop the industrial interests of Smyth and Grayson counties. They have brought to Marion and expended here hundreds of thousands of dollars directly, and vast sums indirectly, making the town one of the most prosperous and progressive places in Virginia. Mr. Campbell and his associate officers have managed the roads in such a manner as to be of incalculable value to Marion and the surrounding country.

Call at D. H. Mitchell Co's. for Extra Select Or...

THE MOST IMPORTANT INDUSTRIAL ENTERPRISE

U. S. Spruce Lumber Co. Furnishes Employment to Hundreds.

Possibly the most important industrial enterprise that has been located at Marion in recent years is that of the United States Spruce Lumber Co. If the question is asked, why is it the most important, the answer will be, because of the large amount of work it has been doing and the heavy expenditures it has made for labor.

This company was organized in the spring of 1904, and in the spring of 1905 began operations with two large band mills—one located at Marion and the other at Fairwood, in Grayson county, the terminus of the Virginia Southern Railroad.

The mill at Marion is located on Staley's Creek, half a mile east of the court house, and is an ideal location. Twenty-two acres of perfectly level land is occupied by the mill buildings and lumber yards. The mill at Marion has a capacity of 60,000 feet daily and the one at Fairwood has a capacity of 80,000 feet. The two mills have sawed since their installment, approximately, 260,000,000 feet of lumber.

The company owns a splendid boundary of 53,000 acres of timber. The following officers have been managing the enterprise since its organization: J. C. Campbell, president; C. W. Amsler, vice-president; L. A. Amsler, secretary and treasurer. Chas. H. Miller, who is a stockholder in the enterprise, has charge of the woods department and all the affairs of the company at Fairwood.

There are two hundred men on the regular pay roll of the company and all its logging and other work in the woods is let to contractors. This means the employment of at least 250 more men and fifty teams for the logging and other work in the woods. One logging contractor alone uses twenty teams.

The company now has 20,000,000 feet of lumber on its yards, and is running both mills to their full capacity.

No wonder the business men of the community are alarmed when an idle rumor gets about that "the band mill is thinking about shutting down." Such an event they know would be a great calamity to labor and the local business interests.

SOUTHERN GYPSUM CO.

DOES LARGE BUSINESS

the senior member of the firm, died on the 5th of June, 1909. He left his entire interest in the concern of W. C. Seaver & Sons, to his two sons and partners, M. M. and George W. Seaver, and also willed them the bulk of his very large estate. They continue to conduct the business under the old name; and it is the oldest business in the town, dating back for about seventy years.

THE VALLEY HOUSE

MARION'S LEADING HOSTELRY

The Valley House, which is modern and up-to-date in every respect, has enjoyed the distinction of being Marion's leading stopping place for the traveling public for over twenty-five years.

Mr. E. K. Coyner, the present proprietor and owner, purchased the property Sept. 1st, 1910, from Mr. J. K. Groseclose and began running the hotel Dec. 2nd of that year. Mr. Coyner has spared no pains in trying to make his place one of comfort. He has repainted the entire interior, repapered it, put in steam heat, replaced the antiquated furniture with new, added extra bath rooms and installed one of the best known fire protection systems. He found it necessary to add to the old building, and it now contains ten more nice rooms than it did at the time he purchased it.

We have inquired of the traveling public as to what kind of table is being set, and each one approached assures us that it is abundantly supplied with the best the markets afford and prepared with unusual skill. That this house is far ahead of the hotels usually found in towns of similar size is proved by its great popularity with traveling men.

Mr. Coyner is courteous to his guests and is highly esteemed by the traveling public.

J. M. BRISCO PASSES THROUGH MOST SUCCESSFUL YEAR

Brisco's is a very popular place with shoppers in Marion, and deservedly so.

Plant Designed for Output of 600 Tons Plaster and Gypsum.

"ECONOMY" PLASTER BOARD OFFERED

Beginning Operations in 1907, the Company Has Continued Work Without Suspension.

The plant of Southern Gypsum Co., Inc., is operating on the old Pearson property three and one-half miles above Saltville. It is connected with the Norfolk & Western Railroad at Saltville by its own standard gauge road. The tract of land in question came into the hands of the Pearson family very early in the past century, being deeded to them by William Poston and wife in 1823. William Poston received the property from Richard Poston whose title to same was covered by grant from the Commonwealth of Virginia through Edmond Randolph, Governor, in 1782.

Sixty years ago the gypsum on the Pearson land was opened up by several small surface pits, and the grinding of the gypsum for land plaster began and was continued in a small way for many years. Flat boats were built in the spring of the year and loaded with the lump gypsum, and during periods of high water these were floated down to various points in Tennessee where the material was ground.

Many tons were ground right at the Pearson farm also, and teams came as far as sixty miles to secure the Pearson Farm Plaster.

Before the land was purchased by Southern Gypsum Co. an adequate supply of gypsum for at least twenty years was positively demonstrated by means of core drilling.

The gypsum on the Pearson farm is of the highest grade. It is opened by a shaft 105 feet deep which is divided into four compartments, two for hoisting of mineral, one for ladder way and one for air ducts and electric wires. The mine is lighted by electricity and all of the machinery in connection with the mine and mill is electrically driven. The company has its own power plant with building of reinforced concrete and in which is installed a 600 horse power steam turbine. At present power is furnished by the Appalachian Power Co., and the power plant is kept in first-class condition ready to meet any emergency in case of trouble to the Appalachian plant. The land plaster mill is located at the shaft and from this mill also large quantities of crude gypsum are annually shipped to Portland Cement Mills where the gypsum is used as retarder.

The very latest forms of grinding and calcining machinery are installed in the wall plaster mill which is connected with the mine by an aerial tram.

The plant as a whole has been designed for total output of 600 tons daily, distributed as follows: 300 tons wall plaster and stucco, 100 tons land plaster and 200 tons crude gypsum for the cement plants.

The company has laid out a village at North Holston and erected a number of suitably designed houses for the employees. Many of these men live in the adjoining village of McCrady. Its brands of plaster are Boone, King's Mountain, Cherokee and White Top. The name Boone was chosen on account of the association of nearby territory with the historic family of Daniel Boone. King's Mountain was chosen through admiration of the officers of the company for the part played by the Southerners in the revolutionary battle of that name. Cherokee and White Top are both terms connected with local history and geography.

In 1914 Southern Gypsum Co. will offer the trade a very superior article in the form of its "Economy" plaster board which takes the place of lath and the first coat of plaster. All interested in building should look into this new

(Continued on page three.)

MARION'S OLDEST FIRM ESTABLISHED IN 1843

W. C. Seaver & Sons, Pioneer Furniture Dealers and Undertakers.

SEVENTY years ago a young man, born at Wytheville, Va., March 17th, 1823, and raised and trained as a cabinet maker in that town came to Marion and took up his residence. That was in 1844, and the young man was William C. Seaver. No better citizen ever lived in the town. He began business in a log building that stood on the corner of the Seaver block, on the ground where the room now occupied as a grocery store by J. H. Parks is located. He was a skilled mechanic, industrious and economical, and from the very first prospered and continued to prosper until he died, June 6th, 1909. Shortly after the close of the Civil War, Mr. Seaver built a small frame house just west of where the old log building had stood, and occupied the new building as a shop and furniture and undertaker's wareroom until the block now known as the "Seaver Block" was erected in 1884.

In 1875 he had built a planing and sawmill on Staley's Creek, where the Seaver furniture factory and planing mill now stands. From 1875 down to the close of the last century the Seaver planing mill was a very important factor in the building industry of the town.

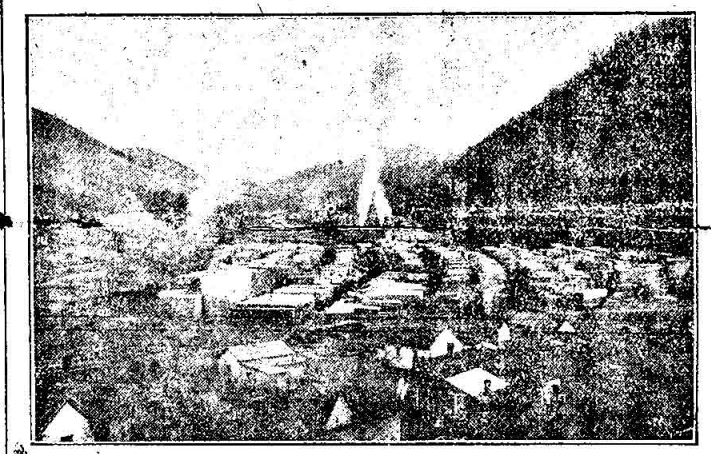
In 1888 M. M. and George W. Seaver were taken into partnership with their father, under the firm name of W. C. Seaver & Sons; and in 1892 the present extensive furniture and undertaking warerooms were added to the west side of the building, and, in connection therewith, the second floor of the entire block, originally used as an opera house, is utilized by the firm for the conduct of their mercantile and undertaking business.

In 1905 a large furniture factory, equipped with modern machinery, was added to the planing mill; and for a considerable period was conducted with reasonable success. For several years this factory has not been in active operation. The Messrs. Seaver, however, will as soon as they can get their large interests relieved from the embarrassments occasioned by the death of their father, make some disposition of or resume operations in the furniture factory.

As before stated, Mr. W. C. Seaver,



SOUTHERN GYPSUM COMPANY'S PLANT



U. S. SPRUCE LUMBER COMPANY'S PLANT



ONE OF SMYTH COUNTY'S FIRST MANUFACTURERS

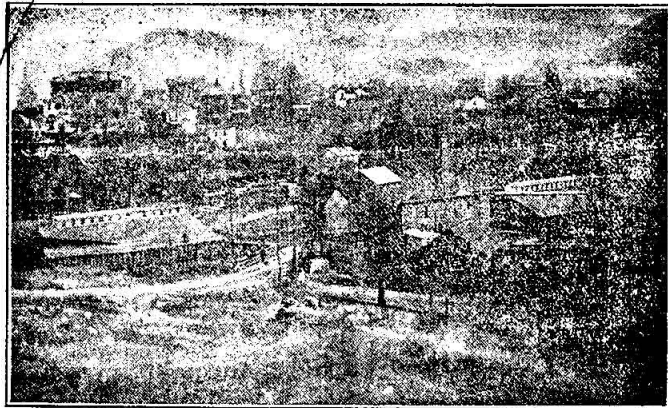
Look & Lincoln, Founded in 1860, Doing
Big Business.

The oldest manufacturing industry in Marion, in point of continuous operating years, under the same name, is that of Look & Lincoln. It was founded by Nathan L. Look, a native of the State of New York, and Charles F. Lincoln, a native of the State of Massachusetts. Charles F. Lincoln died October the 13th, 1891, and was sixty-one years old at the time of his death. Nathan L. Look died May 2nd., 1907, and had reached the venerable age of eighty-eight years at the time of his death. These two men are recognized as among the "most progressive citizens Marion has ever possessed, and are admitted to have accomplished more in the way of



C. C. LINCOLN

but continue to run it under the old and popular firm name of Look & Lincoln.



LOOK & LINCOLN PLANT

making the town a place of industrial activity than any men who have ever lived here. They came to Smyth county in 1856, and settled first in Rich Valley on the celebrated Taylor farm, where they engaged in agricultural pursuits for four years.

In 1860 they conceived the idea of establishing a manufacturing enterprise at Marion. Acting upon that idea they came here in 1860, and purchased the old grist mill that stood where the plow handle factory of Look & Lincoln is now located. The mill was built by William Snaveley but in the late fifties of the last century had become the property of Peter Killinger, from whom it was purchased by Look & Lincoln. Here they established a plow factory, which they operated in a small way until the close of the Civil War.

Immediately after the termination of the war they established a plow handle

The following members are its officers: C. C. Lincoln, president; W. L. Lincoln, vice-president; A. T. Lincoln, secretary and treasurer. These three are men of rare business ability and under their intelligent management the enterprise has continually advanced in importance and largely increased in value. A. T. Lincoln is one of the most popular citizens of the town and county. He represented Smyth county in the late constitutional convention, was elected



W. L. LINCOLN

twice to the State Senate from this, the first Senatorial District of Virginia, and last November was elected without opposition to represent Smyth county in the present House of Delegates.

The Look & Lincoln plants, as they now exist at Marion, have an annual capacity of 400 wagons and 600,000 plow handles, and fifty men are employed in these plants.

The firm has been engaged extensively in the lumber business in Rye Valley for more than ten years. They are operating there regularly from six to eight large mills and are conducting a



A. T. LINCOLN

large store at Sugar Grove. They have 125 men on their saw mill pay rolls, which evidences the extensive character of these operations.

It can be stated without fear of successful contradiction that the old firm of Look & Lincoln was the first to give impulse to manufacturing enterprise in Marion, and the Lincoln boys, who now have charge of the business founded by Nathan Look and their father, Charles F. Lincoln, are fully alive with the spirit that imbued their predecessors. The Look & Lincoln factories have been a great blessing to Marion.

Oldtime Bearded Women.
A bearded woman was taken by the Russians at the battle of Pultowa. She was such a curiosity that she was given to Czar Peter I. Her beard measured 1 1/2 yards. Margaret of Savoy, daughter of Maximilian I., emperor of Germany, and governor of the Netherlands, 1507 to 1530, had a very long, stiff beard. In Bavaria at the time of Wolfius there lived a woman with a great long beard. Mile. Bois de Chene, born at Geneva, it was said, in 1834, was exhibited in London when she was eighteen years old. She had a profuse head of hair and strong black beard.

MARION EXTRACT CO. IMPORTANT INDUSTRY

The Village of Teas a Model of Cleanliness.

Prizes Given for Neatness.

What a serious blunder the people of Marion committed when they permitted, and contributed to, the locating of the plant of the Marion Extract Company in Rye Valley. It was another exemplification of the old saying: "Penny-wise and pound foolish."

The Marion Extract Company was incorporated under the laws of Virginia in 1910, and in July of that year the erection of its plant at Teas was begun. Teas is in Rye Valley, southeast of and about sixteen miles by rail from Marion. Shipment of the products was commenced in February, 1911.

It is the second largest extract works in the world, with a capacity for handling 200 cords of bark and wood each day of twenty-four hours. The plant is equipped with twelve 200 horse power boilers. The largest engine is of 600-horse power. There are 48 large leeches or tanks where the ground wood and bark is leached, and the liquor is then conveyed to a quadruple-effect vacuum pan, where the extract is concentrated. This pan has a capacity of three hundred thousand gallons per day of 24 hours. Chestnut wood, hemlock bark and oak bark are the materials used for manufacturing the extract.

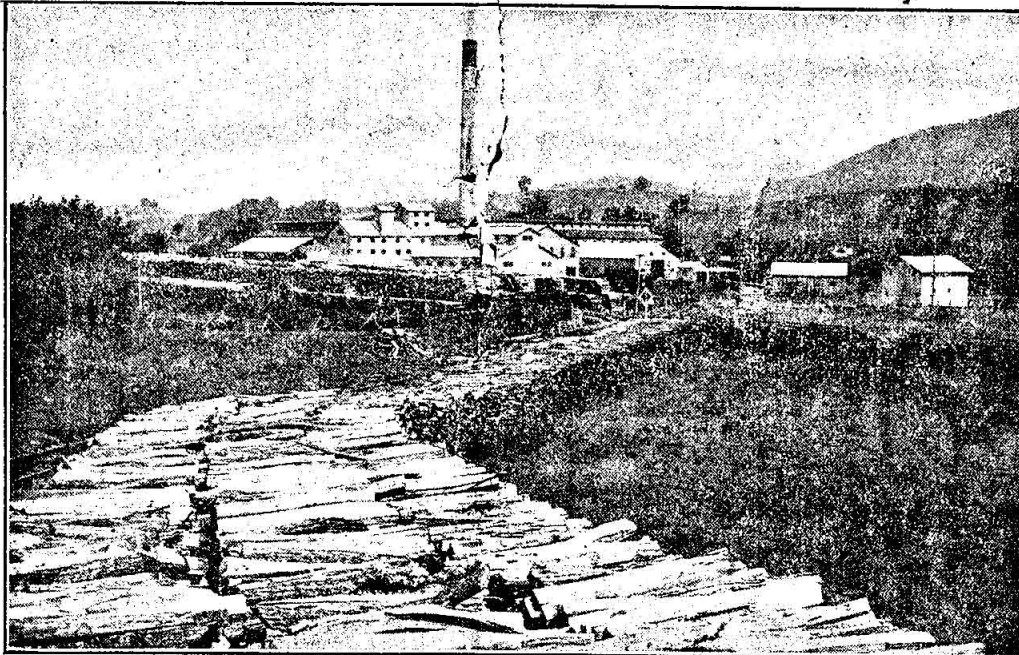
Between eighty and ninety men are employed by the company, there being both day and night shifts.

Nearly and around the main works forty-one neat cottages have been erected for the use of the employes at a moderate rent, each one supplied with an abundance of as pure and fine water

as ever flowed from the earth, and with ample ground for vegetable gardens. Five prizes of \$10 each were given last year to the five employes who kept the neatest yards and had the best gardens. The sanitation is excellent, the cottages being fitted up with screen doors and windows, and cleanliness of the premises being a requirement of all who live upon or work there.

The extract is manufactured in both liquid and powdered forms, the liquid being shipped in large tanks on cars and the powder in bags. The output is mostly consumed by the northern and eastern states of this country, but very considerable quantities are shipped abroad.

The officers of the company are as follows: W. H. Teas, president; E. M. Campbell, vice-president; J. C. Campbell, secretary and treasurer; G. H. Willson, superintendent.



MARION EXTRACT COMPANY'S PLANT, TEAS, VA.

THE H. B. STALEY CO. MILLERS TO MARION

First to Adopt Patent Process, Leaders of Today.

The building now occupied by The H. B. Staley Co. was erected by Z. J. Sugart and W. H. Ancil in 1856 and operated by them for several years. On the 17th of July, 1871 it was conveyed to Joseph Atkins by James W. Sheffey and James H. Gilmore, commissioners in a chancery proceeding against Ancil et als. In May, 1872, Joseph Atkins sold the property to J. A. and J. W. S. Taylor. In 1875 D. D. Hull bought a half interest in the Taylor's. When W. S. Staley came to Marion in 1880 he bought out Taylor's interest. From this year on until 1905 the firm was run as Hull & Staley.

In the year 1895 they installed the



H. B. STALEY

roller mill process, which is said to have been the first one operated in the South. Immediately after the new machinery was set up they began making their celebrated "Snow Flake" brand of flour, which has proven a comfort and delight to every housekeeper who has been fortunate enough to be so situated as to enable them to procure it.

In 1905 H. B. Staley purchased the stock owned in the mill by Mr. Hull and from that time on until the death of Mr. W. S. Staley, June 10th., 1906, the style of the firm was W. S. & H. B. Staley. After the death of the senior member his children, H. B., Thos. F. and D. D. Staley, owned and operated the business jointly under the style of H. B. Staley Company. In 1908 Mr. H. B. Staley purchased the interests of his brothers and has since been sole owner.

The mill is a modern one in every respect and the machinery is being constantly improved and enlarged. The products, consisting of flour, meal, chop, buckwheat flour and chicken feed, are of the highest class and purest grade, and a ready market is found for the entire output. The capacity of the plant is 75 barrels daily and has never, under its new management, had to be closed down for lack of orders.

Good Advice.
Lord Chylesmore is telling an amusing story just now.

He went down to one of the big schools to distribute prizes on breaking-up day, and he says that before the ceremony one of the schoolboys gave him some good advice.

"If you're going to make a speech," said the youngster, "don't be too long. Remember that every minute you spend in talking you are taking something off my holiday!"—Pearson's Weekly.

ALEXANDER SMYTH MAN OF HONOR

Man for Whom Smyth County is Named. Soldier-Statesman.

It will be appreciated by all who are interested in the history of Smyth county, to read a brief historical sketch of General Alexander Smyth, for whom the county is named. For those who have not had the pleasure and profit of reading the "History of Southwest Virginia," by Lewis Preston Summers, we reproduce the following sketch of Gen. Smyth from a very valuable book:

Alexander Smyth was born on the Island of Rothlin, Ireland, in 1765. Emigrated to the United States in 1775, and located in Botetourt county, Virginia. Received an academic education. Studied law, was admitted to the bar in 1789, and commenced practice at Abingdon. Removed in 1792 to Wythe county. Was a member of the State House of Representatives in 1792, 1796, 1800, 1804, 1808. Was appointed by President Jefferson colonel of a United States rifle regiment, which he commanded at the Southwest until 1811, when he was ordered to Washington, to prepare a discipline for the army. Was appointed inspector-general in 1812 and ordered to the Canadian frontier, where he failed in an invasion of Canada, and left the army. Resumed his practice. Was appointed a member of the State Board of Public Works. Was again elected to the State House of Representatives. Was elected a representative from Virginia in the Fifteenth Congress, receiving 1,443 votes, against 711 votes for Estill. Was reelected to the Sixteenth, Seventeenth and Eighteenth Congresses, serving from December 1st, 1817, to March 3rd, 1818. Was again elected to the Twentieth Congress, receiving 2,604 votes, against 991 votes for Sharp, and was reelected to the Twenty-first Congress, serving from December 3rd, 1827, to April 17th, 1830, when he died at Washington City. He published "Regulations of United States Infantry," and "Remarks on the Apocalypse." General Smyth had four children—Alexander, Harold, Malvina and Frances. Malvina married Captain John P. Matthews, who was for many years clerk of Wythe County Court, and a member of the State Constitutional Convention, 1829-1830. Frances married Captain James H. Piper, who at one time represented the Wythe district in the State Senate. Colonel Piper had the distinction of climbing the Natural Bridge in Virginia.

In addition to the above, from the history of Mr. Summers, we have, through the courtesy of Mr. C. B. Thomas, of Wylleville, Va., been furnished a copy of the marriage certificate of General Smyth. It is as follows:

"I do hereby certify that on the 13th day of January, 1791, I joined together in the holy state of matrimony, according to the rights and ceremonies of the Episcopal Church, Alexander Smyth and Nancy Binkley, of the county of Wythe in pursuance of license. Given in my hand and seal, the 15th day of January, 1791. Jacob Raybon, (Seal)"

A petition was addressed by General Smyth in 1814 to Congress for restoration to the army of the United States, with the rank of brigadier general. It seems that in the early day there were rings and cliques in the army and navy, and that General Smyth was a sufferer from the ring men in control of the army. This petition throws much light on his public military career. It is taken from an ironical, published on January 8th, 1814, that is in the possession of the editor of the AMERICAN.

The petition is as follows:

"The following is a copy of the memorial of Alexander Smyth, laid before the house of representatives on Tuesday, the 23rd of December, and by that body referred to the secretary of war.

"To the honorable the senate and house of representatives of the United States in congress assembled:

"The petition of Alexander Smyth, a citizen of Virginia, respectfully represents—That having in 1807 written to an honorable member of the house of representatives, that in case of war with Great Britain he was desirous to enter into the regular service, he received in 1808 an appointment as colonel of a regiment of riflemen. That although war had not commenced, yet the event being probable, he abandoned his profession, which was then lucrative, left his family, vacated his seat in the senate of Virginia as the representative of thirteen counties, and joined the army of the United States. That your petitioner had the good fortune to give the utmost satisfaction to his superiors, General Wilkinson, General Hampton, General Dearborn, and the late Secretary of War, while acting under their immediate orders; was promoted to the rank of brigadier and inspector general in July, 1812; given the command of a brigade in September; and of one of the armies of the United States in October in the same year. That at the expiration of five weeks, during which period he made every exertion in his power to serve the nation, he found it necessary to put his troops into winter quarters. Having determined on that measure, as your petitioner had been absent from his home the last eight winters, much the greater part of the last five years, and the whole of the last fourteen months, and had been refused leave to visit his family in the month of July preceding, and calculating that it was probable the campaign of 1813 might terminate his existence, he, without resigning his command, asked for leave of absence, which was granted until the 1st of March, 1813, at which time your petitioner was ordered to report himself to the Secretary of War. That your petitioner left his troops in cantonments, under the command of an officer of thirty-six years experience, and in February, 1813, reported himself by letter to the Secretary of War, and solicited orders; and as the failure of your petitioner to take Fort George, York and Kingston, and to winter in Canada as he was instructed, had created some clamor, your petitioner proposed that an enquiry into his conduct should take place, which the honorable secretary, through the medium of the adjutant-general was pleased to promise; since which time your petitioner has not had the honor to hear from the war-office.

"Your petitioner would further represent, that he has heard that some members of your honorable body are of the opinion, that by an act of the last session, regulating the staff of the army of the United States, your petitioner has become a private citizen; and with this opinion, his own might, perhaps accord, were it not impossible to believe that the Congress of the United States, at their last session, could have intentionally committed an act of injustice.

"Your petitioner affirms that he has not done or omitted anything to the injury of the nation; that his chief, if not his only error, has consisted in expressing too freely his indignation against those who had done injuries, or omitted to perform duties, to the nation. The motives which led astray, he conceives might procure for this error forgiveness. That this affirmation is true, he believes he can satisfy a committee or committee of your honorable body, on short notice.

Your petitioner has essayed to engage again in the pursuits of civil life, but he finds that while the din of war continues, it is impossible for him to give the necessary attention to any peaceful pursuit. He desires to serve, to die, if Heaven wills it, in the defence of his country; a country that has protected his infancy, given him a family, and at times distinguished him with considerable honors; from whose government no act of wrong, personal to himself, will force his esteem, while it maintains, with steady perseverance, that country's rights.

Your petitioner confidently trusts, that in deciding on his prayer you will be mindful of the rule of justice—To others do, the law is not severe, what to thyself thou wishest to be done; and of the rule of policy, "The social body is oppressed, when one of its members is oppressed."

The prayer of your petitioner is, that you will revise the act organizing the staff of the army of the United States, and by a declaratory act preserve the rank of your petitioner, as a brigadier-general in the line, abolishing only his authority as inspector-general, etc. And your petitioner, etc.

ALEXANDER SMYTH.

D. M. SMITH DRUG CO.

THE REXALL STORE

This company was chartered under the laws of the State of Virginia, in February, 1907; D. M. Smith, W. M. Sclater and M. C. Wolf being the incorporators. It continued as a corporation about two years, and although the entire business is now owned and managed by Dr. Sclater, the firm name has remained the same.

This store has been fortunate enough to secure the local agency for the Rexall line, beyond doubt the most complete and most popular line of drugs manufactured. It is also local agent for the celebrated Huylers line of candies, the brand of quality; and exclusive agents for Eastman Kodak goods.

The ice cream and soda water business has been, since the store opened, a very satisfactory one, the year just ended being the banner year. Dr. Sclater and his polite corps of assistants are attentive to their customers, and are constantly adding to their already lucrative business.

The prescriptions compounded by them are given the most careful attention, and in this line their patronage has been all that one could expect. This store is the State depository for both high school and free school books.

Again the "Sirlions."
King James I. is said to have been so well pleased with a lion of beef as to knight it and make it Sir Lion, or sirlion. However, a story of the same kind was also told of Henry VIII, and is to be found in Fuller's "Church History." Dining with the abbot of Reading, Henry, according to this authority, ate so heartily of a lion of beef that the abbot said he would give 1,000 marks for such a keep. "Done!" said the king, and kept the abbot a prisoner in the tower until he grew ravenously hungry, and won his 1,000 marks and knighted the beef. But Webster characterizes this etymology as "erroneous," saying that the true spelling should be "surlion"—the "sur" being equal to "super."

MARION THE METROPOLIS A TOWN OF PROMISE

(Continued from page one.)

of renewed growth, with an enrollment of about 100 pupils. The Appalachian Power Company station here is lighting the town and furnishing all needed power to manufacturing enterprises. The town is beautifully situated, surrounded by hills and mountains of unsurpassed grandeur. The water is of unsurpassed quality,



J. P. BUCHANAN

pure, and deliciously soft and cool. It comes from springs on Staley's Creek, four miles east of the court house, known as the Atkins Springs. It is supplied by gravity and the source is sufficiently elevated above the town to remove necessity for fire engines. The springs will furnish three millions of gallons a day. The water system belongs to the town. The affairs of the corporation have been well managed in



A. P. SNIDER

the past, and its finances are in excellent condition.

There is no better or more healthful place to live, and no better situation for manufacturing enterprises than is Marion.

The present town government is indicated by the pictures printed along with this article, mayor, council, sergeant, recorder and attorney.

Your Plumbing

In the first place should be properly installed. We have opened a shop in the Jackson Building and are prepared to do any kind of plumbing and heating work on short notice and at REASONABLE PRICES.

We have a complete line of supplies and would like to quote you prices on any work you may need.

Marion Plumbing & Heating Co.
JACKSON BUILDING MARION, VA.

FIRE,
STEAM BOILER,
LIFE,
HEALTH,
ACCIDENT
LIVE STOCK,
LIABILITY,
BURGLARY,
PLATE GLASS,
AUTOMOBILE,
CREDIT
INDEMNITY

James White Sheffey
R. S. Ewald

Sheffey & Ewald
INSURANCE

Information gladly furnished on how to improve your risk, and thereby secure a reduced rate.

Office Over Bank of Marion
Phone 237
MARION, VIRGINIA

History of Southwest Virginia and Washington County

By L. P. SUMMERS

Judge Buchanan, of the Supreme Court of Appeals, of Virginia, in writing the author, says:

"Your history contains much that is new and gathers into one volume much more information as to the early settlement and history of our mountain region than can be found in any work with which I am acquainted. You have rendered a most valuable service to the people of this section and they and the descendants of its early settlers, wheresoever living, can not but read this account of the historic and patriotic actions of their ancestors with pleasure and profit."

Price \$2.50.

For sale by

L. P. SUMMERS

ABINGDON,

VIRGINIA

MARION HARDWARE CO.

LARGEST IN SOUTHWEST

Line Complete With Automobiles and Machinery.

One of the most successful mercantile enterprises of Marion is the Marion Hardware Company. The company was organized Oct. 1st., 1900, and began business on the 20th of the same month. It began business in the Seaver block with a \$4,000 stock. The officers are: B. F. Buchanan, president, C. E. Thomas, vice-president, J. E. Thomas, secretary and treasurer.

The business of the company enlarged so that they were forced to seek new quarters; and in the fall of 1908 they commenced to build the splendid store

bar iron, both of which they buy in car load lots.

On the ground or street floor, which is the largest retail hardware room in Southwestern Virginia between Roanoke and Bristol, they carry a line of shelf goods, mechanics and edged tools, builders hardware, paints, oils, varnishes, stoves, ranges, tin and enameled ware, buggies, harness, saddles, cutlery, guns, fishing tackle, etc. On the second floor, part of which is used as a ware room, they carry a large stock of window glass and seasonable goods, such as screen doors and windows, ice cream freezers, oil cook stoves, heating stoves, etc.

In addition to the above building this concern has a tin shop in the rear of their store building and two warehouses in which they carry a large stock of heavy hardware and kindred lines, such as nails, rubber roofing, galvanized

the two pioneers in the automobile world—Reo by Mr. R. E. Olds and the Maxwell by Mr. E. M. Flanders.

This progressive concern has purchased all necessary material to erect a garage and will begin work on same just as soon as the material can be placed on the ground, and push same to early completion. They have also engaged the services of an expert automobile mechanic whose services will be at the disposal of automobile owners at all times. They now have in front of their present building a Bowser automatic automobile filling tank, from which an automobile can be supplied with gasoline in a few seconds without losing any of the vapor, which is the real power and running quality of gasoline. This project will place them in position to take the best of care of those purchasing machines from them as well as other patrons.

This well known business, by its honest, upright methods of doing business, together with the support of its many friends, has grown to be one of the largest in this end of the state, and the citizens of Smyth and adjoining counties have a just right to feel proud of the concern and should give them their loyal support, as such a varied stock of hardware and kindred lines is rarely seen in a town of equal population.

This, together with the other and extensive and progressive enterprises of Marion, indicate that Smyth county and the town are not only capable of supporting and sustaining such enterprises but that they actually do.

SOUTHERN GYPSUM CO. DOES LARGE BUSINESS

(Continued from page two.)

material and the company will be glad to send samples.

The company began operations in 1907, and has continued work, without suspension, from the beginning. The products of the plants are shipped as far west as the Ohio river, as far east as Washington and Baltimore, and as far south as Tampa, Fla. The excellence of the products has occasioned a growing demand for them. Last year the company supplied 500 tons of fibre plaster for the new Commerce and Labor Building at Washington, 400 tons for the new Court House at Chattanooga, Tenn., 500 tons for the new Murphy Hotel at Richmond and all that was required for the splendid new Rueger Hotel at Richmond.

One can form no idea of the extent of the operation without they go into the mines. The mining is being done in two levels—one is 100 feet and the other is 160 feet below the surface of the ground. Many thousands of tons of gypsum have been taken out, without making any appreciable reduction in the vast amount of the mineral underlying the 100 acres of the Pearson tract at North Holston.

In the mining operations on the two levels many drifts have been run and quite a number of large chambers have

been formed, the ceilings or roofs of the chambers being supported by large pillars of pure gypsum, giving the appearance of a vast natural cavern. With brilliant electric light turned on, the effect is wonderfully beautiful. It will pay any one who delights in subterranean spectacles and splendors, and who is not too timid to descend the shaft, to visit these mines.

The company has already invested more than half a million in its enterprise and continues to make investments for betterments. It possesses an immensely valuable property. In addition to the 100 acres of gypsum bearing ground at North Holston, the company owns 200 acres underlaid with gypsum on the North Fork river, six miles above, known as Taylor-Barns place.

The officers of the company are: F. A. Wilder, president and manager; A. W. Ristine, vice-president; C. H. Ewing, secretary and treasurer; E. T. Archer, mechanical superintendent. All these gentlemen are specially fitted by training for the responsible positions they occupy, and are conducting the great enterprise with marked success. The industry has been a great factor in the industrial and social development of that section of the county; and the native population have greatly benefited by its coming in their midst.

Southern Gypsum Co., Inc., is represented in Marion by Vance-Ellier Corporation, in Glad Spring by Robinson & Keys, in Chilhowie by Jas. L. Vance & Co. and W. H. Copenhaver & Co. and in Abingdon by Vance Supply Co.

Vegetables as Hair Ornaments.
Now that fruit has reached the hair, in the shape of little crages for the bride's coiffure, will it come to vegetable again, as it did among the absurdities of Marie Antoinette's time? "Ask my niece, Mme. de Matignon," we read in the memoirs of the Marquise de Cregny, "if it is not true that in 1785 she had her head dressed à la jardinière, with a red check duster, into which M. Leonard (the queen's hair dresser) had artistically inserted a small artichoke, a broccoli, a fine carrot and some radishes. When Don-don Picot (the Comtesse de Lameth-Picot, a rich creole) saw it she was so delighted that she exclaimed, "I will never wear anything but vegetables. It is so simple, and more natural than flowers."

Were Not Discussing Picture.
His pride was natural, for he was quite a young artist; and there it was—there could be no doubt about it—his picture, his great picture, was hanging in the Royal academy. What's more, two people stood motionless in front while the artist stood afar, gazing at them. Then, "I say, Charlie," he asked his friend, "do saunter carelessly by and find out what they are saying about my picture. Perhaps they want to buy it." Forthwith Charlie set out to do a careless saunter. Presently—to the expectant artist the wait seemed an eternity—he returned to his friend, "She's doing," he sighed. "She's only blowing him up for leaving off his tannels too soon."

MARION NATIONAL BANK FACTOR IN DEVELOPMENT

With Deposits of Over \$300,000 and Resources of \$450,000.

A sound, conservative and accommodating bank is a great boon to any business community. Of this character is the Marion National Bank. It was organized July 3rd, 1903, by O. L. Williams, with a capital stock of \$25,000; and was located in the rooms now occupied by the D. M. Smith Drug Company until the new and handsome building it now owns and occupies was built in 1906.

In a very short while after beginning operations it was evident the capital was too small to meet the rapidly growing business of the institution, and it was increased to \$40,000. The directors have continually enlarged the surplus fund until this fund has accumulated to the amount of \$30,000—the capital and surplus combined now aggregating \$70,000. The bank has paid a semi-

section. They have never charged exorbitant or unlawful rates of interest, but have stuck strictly to a six per cent basis, regardless of the rates charged in the great money centers.

This bank maintains a Savings Department for those who desire to save their earnings and provide for later years, or who are waiting for an opportunity to make a safe investment. They pay 3 per cent on funds so deposited, the interest is compounded semi-annually and added to principal. They have paid to such depositors over \$22,000 in interest. This alone has been an advantage which the people had not enjoyed previous to our organization.

This bank has always picked the best business men for its directors. They are men who have succeeded in their various enterprises which have been established in and near Marion.

The officers and directors are: W. L. Lincoln, president; H. B. Staley, vice-president; T. E. King, cashier; Jno. A. Groseclose, assistant cashier. Directors—W. L. Lincoln, H. B. Staley, R. A. Anderson, Geo. M. Atkins, J. C. Campbell, E. M. Copenhaver, W. H. Teas, F. M. Young, Jno. A. Groseclose, T. E. King.

People of Small Means

are as welcome to participate in the benefits conferred by this bank as are men of wealth.

The Marion National Bank

recognizes as its legitimate function helpful co-operation with those of modest income, and highly appreciates the support which it receives from this class.

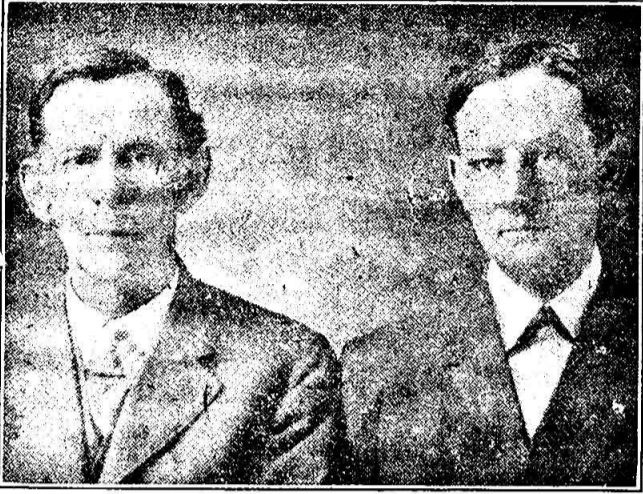
People who desire to open a modest checking account, invest money, embark in a business enterprise or establish a saving plan are invited to confer with the officers of

THE MARION NATIONAL BANK

MARION, VA.

Capital \$40,000.00 Surplus \$30,000.00 Resources \$425,000.00

W. L. Lincoln, Pres. H. B. Staley, Vice-Prest. T. E. King, Cashier. Jno. A. Groseclose, Assistant Cashier.



house they now occupy, at the east end of the bridge over Staley's Creek, and moved into the same on April 1st., 1909.

The building is constructed of brick, with a 50 foot front and 100 feet depth, with a capacious cellar where they carry a large stock of stoneware; consisting of jars, from one to 25 gallon sizes, and

roofing, wagons, buggies, plows, windows, doors, wire fence, etc., all of which they purchase in car load lots.

This concern is also engaged in the automobile business, having a selling agency direct from the factory of the two well known cars, the Reo and the Maxwell, which are manufactured by

material and the company will be glad to send samples.

The company began operations in 1907, and has continued work, without suspension, from the beginning. The products of the plants are shipped as far west as the Ohio river, as far east as Washington and Baltimore, and as far south as Tampa, Fla. The excellence of the products has occasioned a growing demand for them. Last year the company supplied 500 tons of fibre plaster for the new Commerce and Labor Building at Washington, 400 tons for the new Court House at Chattanooga, Tenn., 500 tons for the new Murphy Hotel at Richmond and all that was required for the splendid new Rueger Hotel at Richmond.

One can form no idea of the extent of the operation without they go into the mines. The mining is being done in two levels—one is 100 feet and the other is 160 feet below the surface of the ground. Many thousands of tons of gypsum have been taken out, without making any appreciable reduction in the vast amount of the mineral underlying the 100 acres of the Pearson tract at North Holston.

In the mining operations on the two levels many drifts have been run and quite a number of large chambers have



D. D. HULL, President E. H. COPENHAVER, Vice-President
JAS. WHITE SHEFFEY, Cashier

The Bank of Marion
Incorporated 1874

Capital \$61,650.00
Surplus and Undivided Profits, more than 74,000.00

MARION, VIRGINIA

With modern equipment, including the newest and most fashionable type faces, with labor-saving devices, and with skilled workmen, we are in position to do

JOB PRINTING
Of the Better Class

and to deliver promptly, at reasonable prices.

For Catalogues, Briefs, Commercial and Office Stationery, Circulars, Dodgers, Etc., try

The American

Our Most Prosperous Year

We wish to announce to our Friends and the Public that we have just closed the **Most Successful Year of Our History**

We have been in business in Marion SIXTEEN YEARS, and appreciate the patronage of Marion, and the surrounding country, and have endeavored to sell only the Very Best Goods, and at the smallest margin of profit, and in doing this we have gained the friendship and custom of the best citizens of this vicinity. We are constantly improving our lines and will continue to handle only such merchandise as we feel sure will give the highest satisfaction.

We are Beginning the Year 1914 with a Mammoth WHITE SALE

and invite your inspection, and comparison with the department stores now conducting these sales in the large cities.

SHOES

We call your attention, with confidence, to our unexcelled lines of Guaranteed Footwear. Walk-Over Shoes for men and women; Selby's for ladies; and N. C. Godman & Co's. for women and children. These goods are Fully Guaranteed.

Our Dress Goods Department is now being replenished with the choicest weaves of foreign and domestic manufacturers.

We are agents for the leading lines of Underwear, such as Y. S. F., and Munsing. These goods merit your close inspection.

We are sole agents for Cadet and Quaker Made Hosiery, whose excellence you have tested with the greatest satisfaction for nearly sixteen years.

We are now assembling the greatest display of Millinery for the spring business we have ever attempted. We are agents for all the leading makes in ladies headwear.

We desire to express our appreciation of your esteem, and hope, by continuous effort, guided by a successful experience of sixteen years, to have a continuance of your support.

COLLINS BROTHERS